

FULL HEIGHT TURNSTILE WINGMAN (BI DIRECTIONAL)

MOSFiTM

Registered with MSME (Govt. of India)

Powered by Alaska Automation Pvt. Ltd.

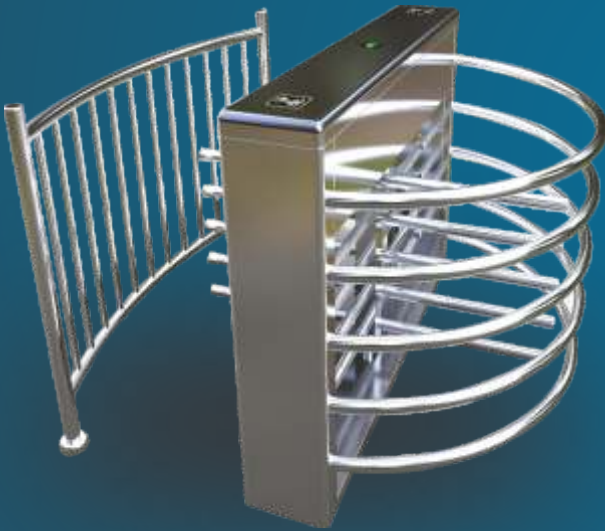
An ISO 9001:2015 Company

WHY **MOSFi** WINGMAN

- **Mosfi** full height turnstile series is designed to provide quickest and safest pedestrian entrance automation Access gate machines.
- At time of designing and manufacturing of Mosfi FHTT machines in these fundamentals value like security of premises, block unauthorized entry, with no noise during operation MAINTENANCE FREE.

FEATURES OF **MOSFi** WINGMAN

- Self resetting function. Prohibiting opposite direction passing, Free wheel (when power off support with requirements of fire fighters).
- **Mosfi** FHTT machines are decorated with **OPTICAL HOLE FOCUS TECHNOLOGY, INDICATORS** (showing passing or prohibiting for the people) **ANTI CRASH SENSOR** (for safety of user), **ANTI COAGULATION SENSOR** (blocking of two person entry), **ANTI PINCH FUNCTION** (support with requirements of fire fighters), **AUTO CLOSE MODE** (in prescribed time **DIRECTION CONTROL** (for pedestrian IN/OUT/BOTH).
- **Mosfi** full height turnstile can integrate with any access control system (hardware/software), visitor management system, bar code management system with all kind of reports. (optional it can customize)



India's No.1 Manufacturer of Entrance Automation Product

PRODUCT APPLICATION



Registered with MSME (Govt. of India)
Powered by Alaska Automation Pvt. Ltd.
An ISO 9001:2015 Company

Power Plants



Conference/Summit Hall/Airport



Defense Prohibited Area



Dams



School



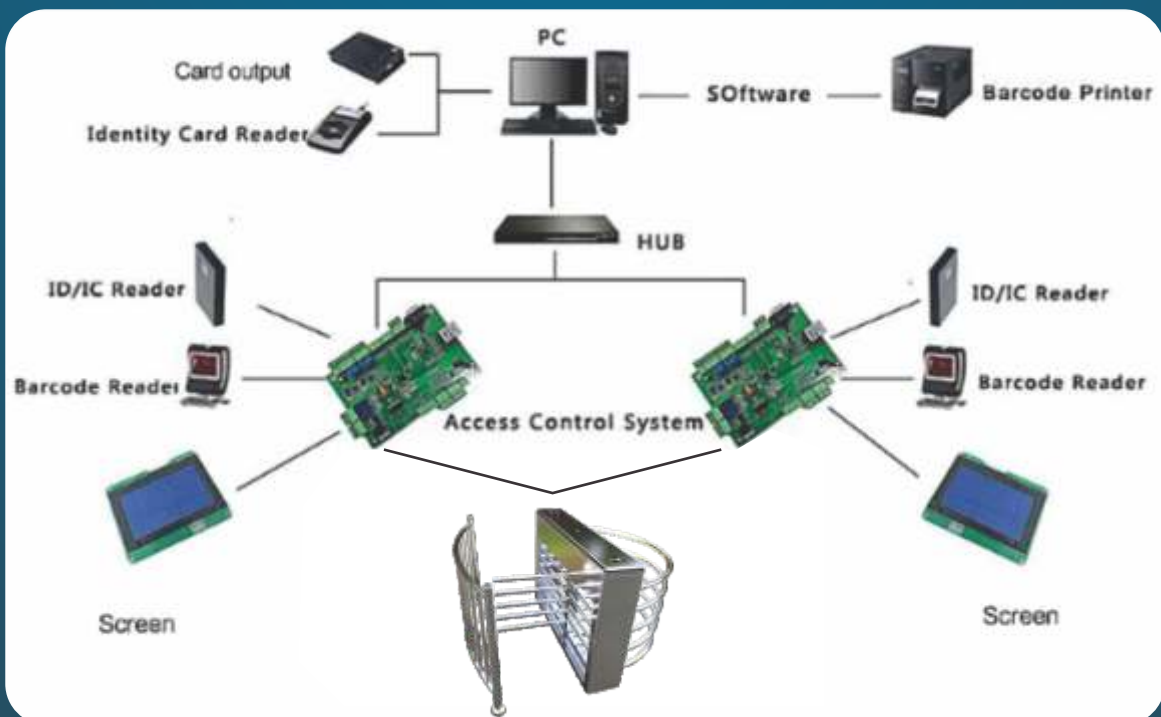
Weapon Factory/Warehouses



Bank/Lockers/Ornaments Warehouse



LAY OUT DIAGRAM FULL HEIGHT TURNSTILE ACCESS CONTROL SYSTEM

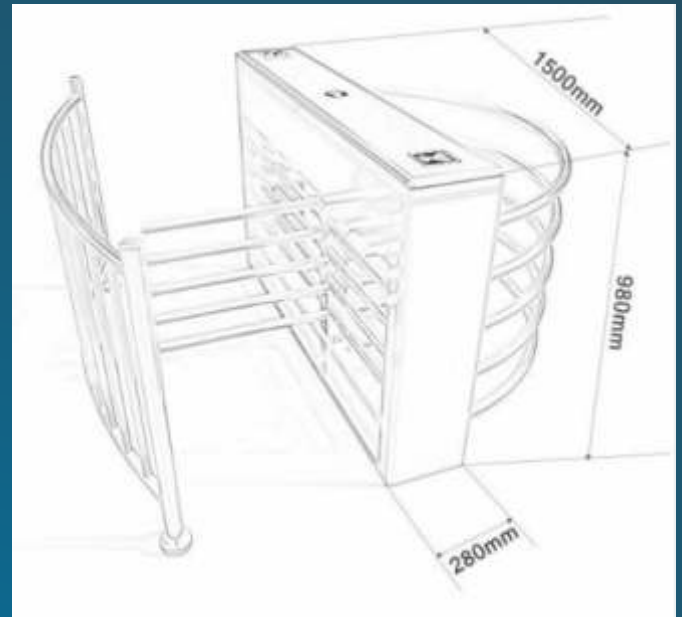


TECHNICAL SPECIFICATION

MODEL No. : SAFEGUARD

Passage Width:	550 mm
Material	STAINLESS STEEL-304
Operating Time:	1 Sec
Arm Turn Degree	90 DEG
Paint	SS BRUSH POLISH
Length of Arm	520mm
Duty Cycle	Highly intensive
Operating Direction:	UNIDIRECTIONAL
Passage Speed:	20 PERSON/MIN
Body Dimension:	1500*280*980mm
Mother Board	MICRO CONTROLLER
Working Current:	2000Ma
Power Voltage	AC220V 50Hz
Input Signal :	OPEN SIGNAL 12v pulse>100ms
Drive Voltage:	AC12V /AC18V
Power Consumption :	20W
Anti Crash Center	INBUILT
Anti Coagulation Sensor	INBUILT
Communication Port:	TCP/IP
IP Protection	IP43
Operation Condition	-15°C~60°C
Humidity	95%
Operation Through	Switches/all access system/manual

MACHINE DIMENSION



Locking System



Gear System



Controller



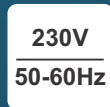
ACTUAL PHOTOGRAPHS



Registered with MSME (Govt. of India)
Powered by Alaska Automation Pvt. Ltd.
An ISO 9001:2015 Company



MOSFi full height turnstiles are best reliable & maintenance free machine for reception areas as well as for unmanned entry & exit points of highly secured areas.



www.alaskagroup.in | sales@alaskagroup.in

Kindly Note : AAPL Reserve the rights to make changes at any stage without any prior notice. Color & Shape may be changed from time to time.